



KERCKHAERT

Dedicated to excellence



RACE CATALOG

CONTENTS

3	Introduction
4	Symbols / Size chart
6	Kings Plate® Leading Finish
8	Kings Plate® Extra Sound
10	Kings Plate® Super Sound Front
12	Kings Plate® Super Sound Hind
14	Super Sound Cu
17	Super Sound Blue Bond
18	Super Sound Smart Bond
20	Fast Break ES
22	Safety Trackx ES
24	Kings Plate® Unclipped & Toeclipped
25	Kings Plate® Toe Insert Series
26	Kings Plate® Degree
28	Kings Plate® Outer Rim
29	Outer Rim
30	Kings Plate® Tradition Toe Insert Series
32	Tradition XT Smart Bond
33	Tradition Fast Break
34	Round Heel
36	Synergy XT
37	Kerckhaert becomes Royal Kerckhaert
38	Legendary XT
39	Legendary RT
40	Alu Century Support®
42	Alu Century Support® Smart Bond
44	Alu Triumph®
45	Alu Triumph® Eggbar
46	Steel Kings Plate® Extra Sound
48	Steel Kings Extra Sound Polo
49	Steel Kings Extra Sound Wide Clip
50	Steel Kings Extra Sound Plus
51	Steel Kings Extra Sound Plus Quarter
52	Steel Kings Extra Sound Plus High Goal Polo Front
53	Steel Kings Extra Sound Plus High Goal Polo Hind
54	Steel Kings DR 15x7
55	Steel Kings DR 16x8
56	Steel Kings DR 19x8
58	The Kerckhaert Kings Plate range - 10 things you need to know

INTRODUCTION

Dear Customer,

In 1906, Honoré Kerckhaert founded the Royal Kerckhaert Horseshoe Factory, at present the largest independent manufacturer of horseshoes in the world.

Honoré had a passion for horses and a vision of what quality horseshoes, designed for the various uses of the horse, would mean to his profession. As a master farrier he understood like no other, that good hoof care does not happen by chance but by horsemen working closely with skilled farriers, using a common sense approach to shoeing; shoeing for comfort, shoeing for success.

In today's racing scene, four generations of the Kerckhaert family have changed the world of farriery through innovations in design. Their understanding has brought a new level of hoof care to the track.

Kerckhaert race plates are designed, shaped and punched to provide all characteristics needed to reach the ultimate goal: winning races.

With the revolutionary Kings Plate® Extra Sound race plate program, Kerckhaert has set new standards in aluminium race plate design, becoming the first choice for leading farriers and trainers around the world in just a few years. Ask any trainer about the improvements they see after using Kerckhaert horseshoes and Liberty horseshoe nails. Stronger and healthier hooves with fewer tendon and ligament problems; how often would that have made a difference to you?

With all the world's major races won on Kerckhaert Kings Plates® it was only a matter of time before Kerckhaert would also develop the perfectly matching Liberty Carrera race nail to go with them. Since their introduction in 2015, the copper coated Liberty horseshoe nails quickly became the new standard with farriers worldwide, because they offer so much more protection to the horse than traditional horseshoe nails.

We thank you for selecting Kerckhaert as your first choice. Enjoy our Kings Plate® race assortment as well as the copper coated Liberty horseshoe nails and experience for yourself how good design and clever improvements positively influence the results and the condition of your horses' hooves in your favourite sport.

Sincerely,

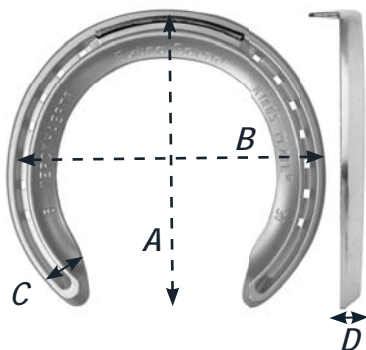
A handwritten signature in black ink, appearing to read 'R. Kerckhaert'. The signature is stylized, with a large, circular initial 'R' and a cursive-style name.



Kerckhaert Family

SYMBOLS



SIZE CHART



	 <i>Front sizes Indication</i>		 <i>Hind sizes Indication</i>	
N°	A=MM	B=MM	A=MM	B=MM
00 - 23	100	100	100	100
0 - 24	106	106	106	106
1 - 25	106	109	109	109
2 - 26	109	112	112	112
3 - 27	115	115	120	115
4 - 28	121	121	125	120
5 - 29	125	125	125	125
6 - 30	128	128	130	130
7 - 32	137	134	134	134
7.5 - 33	138	137	140	137
8 - 34	140	140	145	140

The only type
of race nail
you need

LIBERTY
carrera



Unique, patented
neck design

Super slim shaft

race plate nails with
copper shield technology



KERCKHAERT RACE PLATES
LIBERTY CARRERA RACE NAILS



www.kerckhaert.com

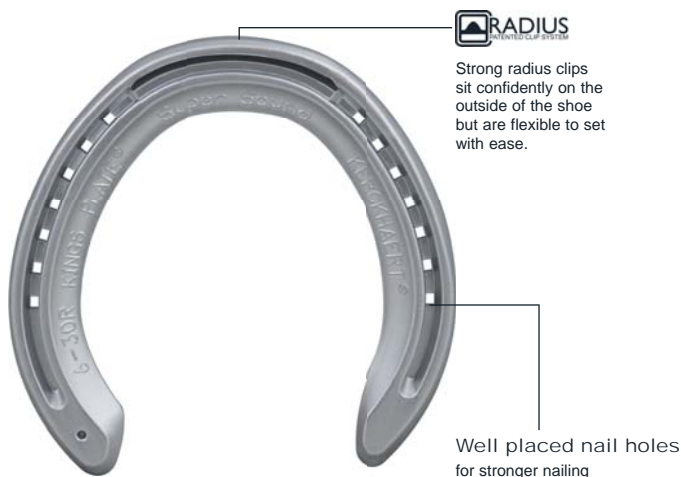
KINGS PLATE®

Leading Finish

GROUND SURFACE



The Kings Plate® race assortment meets all your demands, offering unique features where other race plates fall short. Years of listening to farriers all over the world have created this ultimate multi-faced race plate. A problem foot with limited nail placement is no longer a problem with extra nail holes providing options when they are needed most. Precisely shaped fronts and hinds mean that the shoe literally drops on.



FOOT SURFACE



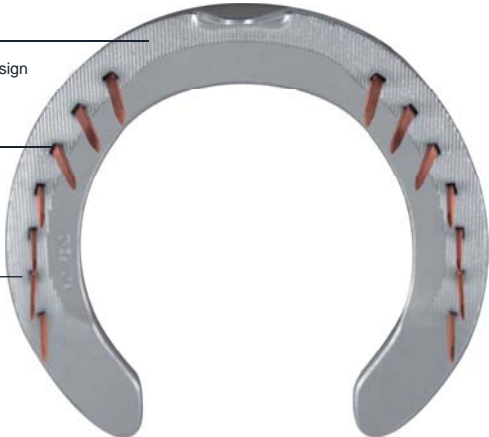
- patented foot surface design

Super Pitch

stronger nailing & tighter
clenches in first 3 nail
holes

Small lines

give the plate grip against
the hoof



During design and manufacturing, we pay great attention to small details which are often overlooked by other manufacturers. This has resulted in a unique foot surface design, so advanced that the design has been patented. The inside edge of the foot surface is seated-out to avoid sole pressure. The rest of the foot surface is covered by small lines to give the plate grip against the foot. At the same time the heels are left smooth, which allows natural expansion at the heels when the foot is weight bearing.

Sole Relief

built in, saving you time

Smart heels

allows natural expansion

Super Pitch

in first 3 nail holes
of outside branch



KINGS PLATE®

Extra Sound



Because comfort for the horse is an important part of their success the Kings Plate Extra Sound is now regarded as the favourite aluminium race plate by farriers and trainers worldwide.

The front shoe is the ideal shape for the modern thoroughbred racehorse. The toe conforms to the natural shape of the hoof making it easy to fit.

The wider section offers more cover and support to the hoof while the rounded edges reduce the risk of injury or losing shoes.

The patented Sole Relief reduces pressure and concussion to the sole when the hoof is under extreme stress while galloping.

The unique scooped concave section designed by Kerckhaert gives the horse much better grip as the shoe cuts into the surface.

The scoop is more defined at the toe while it becomes flatter as it comes round to the quarters.

The coarseness of the nail holes perfectly matches the natural thickness of the hoof wall.



Toeclipped
Normal Strength

- Available in sizes: 3, 4, 5, 6, 6.5, 7, 7.5, 8
- level insert

Toeclipped
Extra Strength

for race horses which have to do road-work or are heavy on their shoes

- Available in sizes: 3, 4, 5, 6, 6.5, 7, 7.5, 8
- level insert

Go to page 46 for a look at the Steel Kings Extra Sound!



Outside branch indicator

The hind shoe continues to be the easiest aluminium plate to fit. The specially designed left and right pattern is based on anatomical and biomechanical principles understood by the Royal Kerckhaert Horseshoe Factory a long time ago and used in many of their hind shoes.

The outside branch is slightly longer and wider for better cover and support, but the inside branch is tapered for close fitting to avoid brushing. The wider section gives more cover and also gives much better shoe wear. **That's why it's Extra Sound!**



Unclipped

- Available in sizes: 4, 5, 6, 7
- level insert



Sideclipped

- Available in sizes: 4, 5, 6, 7, 7.5, 8
- level insert

Sideclipped

- Extra Strength
- Available in sizes: 4, 5, 6, 7, 7.5, 8
- level insert

BLUE BOND



Kings Plate® Extra Sound Blue Bond Toeclipped

- Available in sizes: 3, 4, 5, 6, 7, 7.5, 8
- level insert

KINGS PLATE[®]

Super Sound

Super Pitch Plus
in first 3 nail holes

drive nails higher into
the hoof wall



OSUPPORT
REGISTERED MODEL

Heel Elevation

- better hoof balance
- reduce stress to the limb



Toeclipped

- Available in sizes: 4, 5, 6, 6.5, 7, 7.5, 8, 9
- level insert

Toeclipped

Extra Strength

for race horses which have to do road-work or are heavy on their shoes

- Available in sizes: 4, 5, 6, 6.5, 7, 7.5, 8, 9
- level insert



A PLATE EVOLUTION



The Royal Kerckhaert Horseshoe Factory is proud to launch the latest addition to its popular range of aluminium Kings plates.

The Kings Plate Super Sound was designed to improve the fitting to the hoof and has a whole range of exciting new features, which enhances the performance of the horse.

The great front shoe shape means that the Kings Super Sound just drops on most thoroughbred feet, slightly wider than the normal Kings Plate® Extra Sound; the Super Sound offers superior cover and support which ELIMINATES SORE HEELS.

The toe design has been evolved to improve break over while the patented Sole Relief continues to protect against sole pressure and bruising.

Super Pitch Plus has been introduced to the first three nail holes, giving extra pitch. This allows the farrier to drive nails higher into the hoof wall even on flatter feet. (No other aluminium race plate has so much pitch available to the farrier)

The Super Sound front shoe also features the new Heel Elevation. The subtle heel elevation will help farriers to achieve better anterior / posterior hoof balance of the hoof, while the wider heel design will improve the fit when extra cover and support are needed. This will also reduce stress to the back of the hoof.

The concave section continues to be deeper at the toe than at the heels. This gives the shoe more traction at the toe and also more support at the quarters. On top of all that the latest high quality aluminium gives improved wear.

The Kings Plate® Super Sound front shoe is perfectly complimented when fitted together with the Kings Extra Sound hind shoes.

KINGS PLATE[®]

Super Sound

Super Pitch Plus
in first 3 nail holes of
outside branch

drive nails higher into
the hoof wall



ΩSUPPORT
REGISTERED MODEL



Toeclipped

- Available in sizes: 5, 6, 6.5, 7, 7.5, 8
- level insert

Toeclipped
Extra Strength

for race horses which have to do road-
work or are heavy on their shoes

- Available in sizes: 5, 6, 6.5, 7,
7.5, 8
- level insert



The new hind pattern Super Sound has been developed to compliment the front shoe.

With left and right pattern hind shoes that just drops on saving time, plus the wider outside heel gives good cover to the foot.

The first three nail holes on the outside branch also have Super Pitch Plus. This makes nailing easier and results in stronger nailing and tighter clenches.

The hind shoe has a slight bevel in the toe, with a strong Radius clip, important on hind shoes to stop them from spreading.

The inside branch and heel is nicely bevelled to reduce brushing with the opposite limb.

The foot surface has the standard Super Sound features, sole relief, grip pattern with a dull finish to help keep the shoe in position. While the heels are smooth and shiny to allow heel expansion.

Super Sound plates are quick and easy to fit. Farriers notice that after fitting Super Sound plates the hooves become stronger and healthier.

SUPER SOUND Cu®



Heel Elevation

- better hoof balance
- reduce stress to the limb



Toeclipped

- Available in sizes: 5, 6, 7, 7.5
- level insert

Toeclipped

Extra Strength

for race horses which have to do road-work or are heavy on their shoes

- Available in sizes: 5, 6, 7, 7.5
- level insert

Super Sound Cu are our most advanced race plates ever. They have all the features of the Kerckhaert Super Sound race plates and more, because they are made with Kerckhaert's unique Copper (Cu) Shield Technology™, which offers extra protection, especially to the weight-bearing edge of the hoof and the white line area.

Copper Shield Technology™ was first developed for Liberty Cu horseshoe nails. Hoof wall, white line and sole are stronger and healthier when used on a daily basis.

In 2016 two independent scientific studies on Liberty Cu horseshoe nails have confirmed these benefits.

Copper Shield Technology™ is unique to Kerckhaert.

Go to page 12 to read more about Super Sound!



Toeclipped

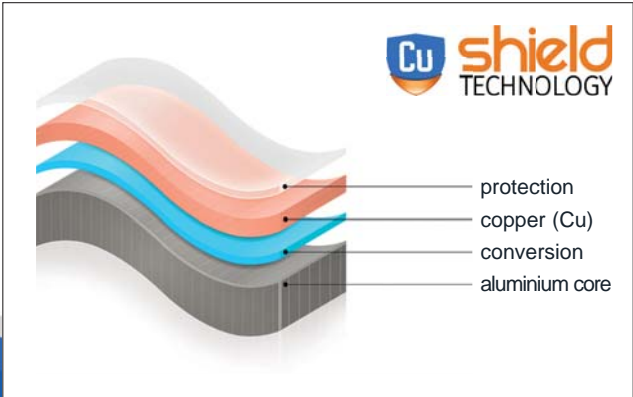
- Available in sizes: 5, 6, 7, 7.5
- level insert

Toeclipped

Extra Strength

for race horses which have to do road-work or are heavy on their shoes

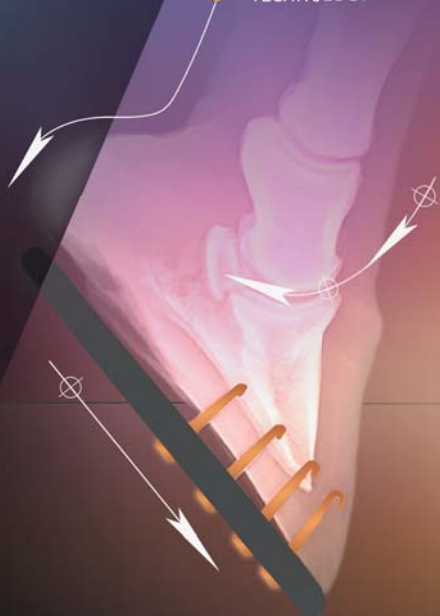
- Available in sizes: 5, 6, 7, 7.5
- level insert





HORSESHOE NAILS WITH COPPER SHIELD TECHNOLOGY

Cu shield
TECHNOLOGY



KERCKHAERT NAIL HOLE SOLUTION

- Disinfects old nail holes
- Slows down growth of new bacteria & fungi
- Forms a barrier between hoof and environment

LIBERTY

KERCKHAERT
dedicated to excellence

SUPER SOUND

Blue Bond



ΩSUPPORT
REGISTERED MODEL

From now on our Kings Plate® Extra Sound Blue Bond race plates in sizes 4, 5, 6, 7, 7.5 and 8 will be replaced by Super Sound® Blue Bond race plates. Only size 3 will remain available as Kings Plate® Extra Sound Blue Bond.

Reason for this change is that we recently made a whole series of spectacular improvements on our own, already unsurpassed, world famous Alu Kings Extra Sound race plate program. The new, wider Kings Plate Super Sound® race plates offer even more comfort and protection, allow natural, unimpeded hoof expansion and drastically reduce bruising and soreness, through multiple innovative and patented features. The horse will perform better because it has more balance and support. Patented Super Pitch Plus will give you the best nailing experience ever and your horse will have sounder and thicker hooves.

Super Sound® Blue Bond - The master farrier's blend of style and performance



Toeclipped

- Available in sizes: 4, 5, 6, 7, 7.5, 8
- level insert

SUPER SOUND

Smart Bond



Heel Elevation

- better hoof balance
- reduce stress to the limb



OSUPPORT
REGISTERED MODEL



Toeclipped

- Available in sizes: 4, 5, 6, 7, 7.5
- level insert

The new Super Sound front shoe has been crossed with the Blue Bond Extra Sound, to create the all new Super Sound Smart Bond.

The special anti-concussion Blue Bond material was bonded to the Super Sound race plate onto the heel quarter of the shoe behind the fourth nail hole. This is the area where most of the concussion enters the hoof capsule and where the horses natural anti-concussion structures are located. The bonded area is slightly elevated above the rest of the shoe but as soon as the hoof is weight bearing the rubber compresses, maintaining a level foot surface and contact with the shoe while reducing concussion at the point of impact.

The benefit of the Smart Bond process is that, in the front half of the race plate, where the nail holes are located, the aluminum plate is in direct contact with the hoof. This ensures that the race plate doesn't move, which in the past has sometimes resulted in risen clenches.

The innovative features found on the new Super Sound horseshoes include:

- Super Pitch Plus (more pitch on the nail holes at the toe quarter)
- Extra bevels on the ground surface (to improve break-over, reducing stress to the limbs)
- Wider, slightly elevated heels, for even more support, an improved pastern angle and better hoof balance

The Super Sound Smart Bond has all the excellent design features you have come to expect in the Kings Race program.

These include an easy-to-fit shape, the highest grade aluminum together with a steel toe-insert for better wear, Sole Relief, precisely punched nail holes for stronger nailing and a wider section, to give the hoof more cover and support.

Super Sound combined with Smart Bond
A winning combination



FAST BREAK ES



OSUPPORT
REGISTERED MODEL

Heel Elevation

- better hoof balance
- reduce stress to the limb



Unclipped

- Available in sizes: 4, 5, 6, 7
- level insert



Sideclipped

- Available in sizes: 5, 6, 7, 8
- level insert

Correctly fitted, the new Fast Break Extra Sound front shoe can improve break-over on a long toed thoroughbred hoof capsule, without having to overdress the hoof wall which can leave the hoof weaker and prone to over expansion.

The Fast Break Extra Sound follows the shape of the Extra Sound plate but has a flatter / shorter toe to improve break over.

This innovative shoe also has an improved design bevel around the toe and right back to the heel quarters which allows the hoof to break over more quickly, reducing the strain on the flexor tendons and ligaments down the back of the leg. This shoe will also reduce pressure to the back of the hoof capsule which can result in corns.

As well as the improved features at the toe of the shoe, this plate also includes many of the designs you find in the popular Extra Sound plate. Strong Radius quarter clips which are easy to fit and allow the plate to be fitted under the toe. The wide webbed section helps to distribute energy across a larger area of the hoof, while the new concaved section provides better grip and Sole Relief to reduce pressure while the hoof is weight bearing.

The heel design has been improved to increase the width of the bearing surface, while a slight elevation at the heels helps those horses with low heels. It is common for horses to have a combination of long toes and low heels.

The New Fast Break Extra Sound is the perfect solution.

The nail hole position ensures that the nails enter the hoof at the strongest point reducing splits in the hoof wall, while keeping the nail tight in the shoe. The heels of the shoe are designed for close fitting to reduce the risk of the shoe being pulled off while offering the maximum amount of support to the hoof.

Fast Break Extra Sound
Improving the horse's performance

SAFETY TRACKX ES



OSUPPORT
REGISTERED MODEL



Outside branch
indicator

The new innovative Safety Trackx Extra Sound Aluminum Race Plate is the latest addition to the Kings Race plate program from the Royal Kerckhaert Horseshoe Factory.

The Safety Trackx ES is designed to improve grip and performance for thoroughbred race horses on all types of surfaces, while retaining many of the excellent design features found in the Kings Extra Sound program. This extra grip is particularly beneficial in reducing sideways slipping while the horse is going round corners. The Safety Trackx ES also improves traction as the horse leaves the starting gates.

The Safety Trackx ES unique feature is the ground surface which has 100% contact with the ground, keeping the hoof in balance and reducing stress and bruising which is sometimes found on horses shod with toe grabs. The cross section of the Safety Trackx ES highlights the high outside rim of the shoe with a much lower edge on the inside of the crease. This allows the nail heads to remain at the same height as the plate but allows the plate to achieve much more traction on any surface.

The Safety Trackx ES is a front shoe based on the Extra Sound, which has a symmetrical shape designed to fit a balanced hoof. Made from the latest high quality aluminum it ensures both improved wear quality together with flexibility so the plate is easy to shape to the horses hoof.

Key features incorporated in the Safety Trackx ES include a strong Radius toe clip, which is easy to fit, precisely punched nail holes which help to keep the nails tight in the shoe reducing risen clenches, Sole Relief to avoid pressure as the hoof is weight bearing and a steel toe insert for better wear.

Get a grip on the new Safety Trackx ES



Toeclipped

- Available in sizes: Front: 4, 5, 6, 7, 7.5
Hind: 4, 5, 6, 7, 7.5, 8.5
- level insert

KINGS PLATE®

Unclipped & Toeclipped



Unclipped

- Available in sizes: 2, 3, 4, 5, 6, 7, 8
- level insert



Toeclipped

Normal Strength

- Available in sizes: 2, 3, 4, 5, 6
- level insert

KINGS PLATE®

Toe Insert Series

KINGS XT



2 mm



The XT version of the Kings Plate® is also allowed on many turf tracks. Commonly used by trainers when horses may race either on turf or dirt. Same great features as the Kings Plate®.

The Kings XT version provides a toe grab 2 mm above the shoe, to help with traction.

• Available in sizes: Front: 2, 3, 4, 5, 6, 7, 8 Hind: 4, 5, 6, 7, 8

KINGS LT



3,9 mm



The Low Toe style is another option for dirt tracks. The toe grab is 3,9 mm above the shoe.

• Available in sizes: 3, 4, 5, 6, 7

KINGS RT



5,5 mm



The regular toe is used primarily on dirt tracks. The toe grab is 5,5 mm above the surface of the shoe. The hind pattern is often used in conjunction with other styles of front shoes. The features of this shoe include a steel toe insert, Sole Relief, good nail placement with plenty of options and tapered heels that save time. The web of the shoe is slightly wider providing a good base of support and strength to prevent spreading, especially on "stall kickers".

• Available in sizes: Front: 3, 4, 5, 6 Hind: 2, 3, 4, 5, 6, 7, 8

XT BLUE BOND



2 mm



• Available in sizes: 3, 4, 5, 6, 7

• Unclipped

KINGS PLATE[®]

Degree



OSUPPORT
REGISTERED MODEL



The Kings Plate® Degree front shoe is designed to provide extra lift for the hoof that has very little heel length and where the hoof tends to grow forward. The additional wedge design helps to support the limb and minimizes stress on the structures of the limb.

Very often this additional support also helps to minimize the impact on a frog that protrudes more than normal. Fitted properly, there can also be some lessening of impact on the bulbs of the heel, creating a situation for the horse to be more sound than it might be with a flat shoe.

All Kings Plate® Degree shoes have the same unique features as the whole Kings range. Please take a look at the wider ground surface in the heels for extra support and less pressure; this extra feature makes the difference.

The Kings Plate® Degree hind shoe has a wedge of approximately 2,5 degrees.



Toeclipped

- Available in sizes: 4, 5, 6, 7
- level insert



Toeclipped

- Available in sizes: 4, 5, 6, 7, 7.5, 8
- level insert



KINGS PLATE®

Outer Rim



If full traction is needed...

The Kings Plate® Outer Rim front shoes have the same excellent shape, design and all other strong options as the regular Kings plate. This design has the perfect shape for most thoroughbred and quarter horses.



2 mm



Unclipped XT

• Available in sizes: 4, 5, 6

OUTER RIM



When full traction is required...

The Outer Rim plate is proving a popular option for the sport of Trotting. The extra traction, which is achieved from the Outer Rim, helps keep the horse balanced and in rhythm, reducing the chances of the horse breaking out of trot.

The farrier also has the benefit of all the advantages of the Kings Plate® design, a shape that's easy to fit, together with good nail placement, Sole Relief and excellent wear.

The Outer Rim shoe will fit standard bred horses more easily. In some countries it is also used on thoroughbreds. If full traction is required, the Outer Rim is the solution.



2 mm



Unclipped XT

• Available in sizes: 4, 5, 6, 7, 8, 9



2 mm



Toeclipped XT

• Available in sizes: 3, 4, 5, 6, 7, 8, 9, 10



2 mm



Toeclipped XT

• Available in sizes: 4, 5, 6, 7, 8



2 mm



Blue Bond Unclipped XT

• Available in sizes: 6, 7, 8

KINGS PLATE® TRADITION

Toe Insert Series

Kerckhaert continues to expand the selection of race plates for the North American market.

This shoe was designed to satisfy the demand of many American farriers for a shoeing style that doesn't require the full toe and rounder shape of the normal Kerckhaert race plate.



While the toe shape is more natural in comparison to many other brands of race plates (not pointed) the branches are less round, providing a quicker fit for the narrower feet. The nail placement is also slightly different yet still offers excellent nail placement choices.



In addition to the shape and nail placement changes, this shoe also offers a slight taper from toe to heel to suit a more traditional shoeing style.

The shoes have a well-defined Sole Relief built in and the taper of the heel cut minimizes the finishing work in that area.

Available in front and hind.



Innovation
Radius corners on all inserts for more safety

TRADITION



• Available in sizes: 4, 5, 6, 7, 8

• level insert



TRADITION XT



2 mm

• Available in sizes: 3, 4, 5, 6 Size: 7, 8 only available in Front



TRADITION LT



3,9 mm

• Available in sizes: 4, 5, 6



TRADITION RT



5,5 mm

• Available in sizes: 3, 4, 5, 6, 7



TRADITION QT



8 mm

• Available in sizes: 3, 4, 5, 6, 7



TRADITION XT TOECLIPPED



2 mm

• Available in sizes: 4, 5, 6, 7



TRADITION RT TOECLIPPED



5,5 mm

• Available in sizes: 4, 5, 6, 7



TRADITION QT TOECLIPPED



8 mm

• Available in sizes: 4, 5, 6



TRADITION XT BLUE BOND



2 mm

• Available in sizes: 4, 5, 6, 7



TRADITION XT

Smart Bond[®]



The Smart Bond[®] Race Plates from the Royal Kerckhaert Horseshoe Factory are the latest innovation from the world's leading designer & manufacturer of steel and aluminum horseshoes.

Working closely together with racetrack farriers around the world, Kerckhaert has developed what is sure to be a dramatic improvement in the design of bonded race plates. Farriers and veterinary surgeons recognize heel soreness to be the most common causes of pain and lameness in the performance horse. The impact to the heel area of the hoof at nearly 40mph is very significant.

The Smart Bond[®] Race Plates have a layer of specially developed rubber, bonded only onto the heel quarter of the shoe behind the third nail hole. The bonded area is slightly elevated above the rest of the shoe, but as soon as the hoof is weight bearing the rubber compresses, maintaining a level foot surface and contact with the shoe while reducing concussion. The brilliantly simple but effective design enhances the natural shock absorbing qualities of the hoof, working together with the frog, digital cushion and lateral cartilages. The Tradition XT Smart Bond helps to reduce concussion at the point of impact.

The Smart Bond[®] Race Plates allow the hoof to be supported by the strong, non-bonded area of the shoe; reducing the amount of movement between the shoe and the hoof, maintaining strong clinches and secure shoes. Experience shows that many horses are more comfortable and move more freely when shod with bonded plates; the new Smart Bond will take that to a new level.

Once again, the Royal Kerckhaert Horseshoe Factory has shown that working together with its partners and farriers can produce dramatic improvements to horseshoe design.



2 mm



Tradition XT Smart Bond

• Available in sizes: 4, 5, 6, 7

TRADITION

Fast Break



The Fast Break aluminium race plate from Kerckhaert offers the race market a nicely shaped shoe that enhances breakover.

This enhanced breakover can relieve the stress on tendons caused by long toe situation. The Fast Break is made with the same attention to detail in good punching and shape that Kerckhaert is noted for. A number of top trainers have found this style shoe reduces stress on the limbs, especially in younger horses.

The Fast Break is available unclipped (level) and unclipped with a XT toe insert, front shoe only.



Unclipped

- Available in sizes: 4, 5, 6, 7
- level insert



2 mm



Unclipped XT

- Available in sizes: 4, 5, 6, 7

ROUND HEEL



The Round Heel has been developed by Kerckhaert to give the farrier a safer option to improve grip on a variety of different surfaces.

The heel inserts help maintain hoof balance when the horse is standing on hard surfaces, yet improving stability while the horse is galloping.

Having heel inserts maintain medial/lateral balance of the hoof at the same time helps counterbalance the effect of the toe grab.

The carefully designed round inserts have no sharp edges. This eliminates the risk of injury through interference, including brushing. The high quality aluminium used by Kerckhaert reduces the risk of the plate spreading during the entire shoeing cycle.



5,5 mm



Tradition RT Round Heel
• Available in sizes: 5, 6, 7



8 mm



Tradition QT Round Heel
• Available in sizes: 4, 5, 6



Kings Plate Extra Sound Round Heel Unclipped

- Available in sizes: 4, 5, 6, 7
- level insert



Kings Plate Extra Sound Round Heel Toeclipped

- Available in sizes: 3, 4, 5, 6, 7, 7.5
- level insert



Kings Plate Extra Sound Round Heel Sideclipped

- Available in sizes: 4, 5, 6, 7
- level insert

SYNERGY[®] XT



The Synergy[®] shoe is developed especially for use on synthetic training and racing surfaces.

Discussions with top farriers regarding the problems they noticed with conventional designs resulted in this highly innovative style.



Bevels at the toe and around the branches of the shoe, along with the extension of the aluminum at the toe to the top edge of the XT toe insert are steps taken to help minimize the “sticking” of the foot on landing.

The increased opportunity to have some natural slide on landing should help reduce chances of upper limb soreness.



The reduced crease area and the rounded branches of the heel area are also design features to allow for more natural slide.

The toe insert is XT, and special design behind the toe still allows for any traction needed for propulsion out of the gate and while traveling at speed.



2 mm



Toeclipped XT

• Available in sizes: 4, 5, 6



2 mm



Unclipped XT

• Available in sizes: 4, 5, 6

KERCKHAERT BECOMES Royal Kerckhaert



In 2008, on the occasion of our centennial anniversary in 2006, Her Majesty Queen Beatrix of The Netherlands granted our company the predicate Royal. Since then the name was changed to Royal Kerckhaert Horseshoe Factory and the Royal Crown was added to the company logo.

The predicate Royal is a distinction which symbolizes the respect, appreciation and trust of the Monarch toward the receiver.

The predicate Royal was granted to about 150 companies in the Netherlands. Each company was screened in advance by the local and national government. After both authorities gave positive approval the predicate Royal was granted.

Some of the criteria the company has to meet are:

- to have been in existence for at least 100 years
- to be a leader in its field
- to be of national importance
- to be financially healthy
- to have a clear company vision

The success of the Royal Kerckhaert Horseshoe Factory has been the result of many years of hard work by the different generations of the Kerckhaert family supported by friends, factory staff and a worldwide network of Kerckhaert dealers and professional farriers who choose Kerckhaert horseshoes above all others.

The Kerckhaert family are very honored and grateful by this distinction.

LEGENDARY XT



2 mm



Unclipped XT

• Available in sizes: 4, 5, 6, 7, 8

The Legendary XT is the latest edition to the Kings Race program. Designed especially for the thoroughbred race horse with a more narrow hoof which is straighter in the quarters.

The Legendary XT just drops on, making fitting much easier and quicker.

The Legendary XT also has a slightly thicker section which elevates the sole away from the ground so reducing impact.

The crease and nail pattern ensure both strong and safe nailing which will reduce damage to the hoof walls.

The open heels with boxed off foot surface allows the farrier to fit the plate with room for natural hoof expansion.

LEGENDARY RT



5,5 mm



Unclipped RT

• Available in sizes: 4, 5, 6, 7

The newest addition to the popular Kerckhaert range of aluminum racing plates is the Legendary RT hind. Combined with the Legendary XT front, this shoe gives the farrier that prefers a slightly thicker shoe an option for extra strength.

The shape is more similar to race plates produced in the market prior to the Kerckhaert Kings and Tradition styles. The regular toe grab (5,5 mm) is commonly used on dirt tracks throughout North America for thoroughbreds and quarter horses.

Farriers everywhere have a certain style that the broad range of options in the Kerckhaert program can satisfy. This shoe provides one more possibility to find just the right shoe for every shoeing style.

ALU CENTURY SUPPORT[®]



- ✓ Built in break over at the toe, reducing stress in the tendons and ligaments in the leg.
- ✓ Wider section at the heels for more cover and support, improving the blood circulation in the hoof.
- ✓ For the clip version, the clips on both the front and hind shoes are carefully positioned on the outside of the shoe, for quick and easy fitting with minimum removal of the hoof wall.
- ✓ Each nail hole perfectly supports the nail, keeping the shoe secure to the hoof. While the crease is punched at the correct coarseness to ensure the nail is driven into the white line.
- ✓ As with all Kerckhaert horseshoes, all the edges are carefully rounded to avoid injury from brushing or treading off shoes.

The Century Support® is made from the most advanced modern aluminium, the dimensions and hardness of the aluminium together with an integral fitted wear plate results in the Century Support being the best wearing aluminium horseshoe available today.

The Royal Kerckhaert Horseshoe Factory has incorporated many key design features into the Century Support Horseshoe.



Unclipped

- Available in sizes: 000, 00, 0, 1, 2
- level insert



Toeclicked

- Available in sizes: 00, 0, 1, 2
- level insert



Quarterclipped

- Available in sizes: 00, 0, 1, 2, 3, 4
- level insert



Sideclipped

- Available in sizes: 00, 0, 1, 2, 3
- level insert



Degree Unclipped approximately 2,5 degrees

- Available in sizes: 000, 00, 0, 1
- level insert

ALU CENTURY SUPPORT[®]

Smart Bond



ΩSUPPORT
REGISTERED MODEL



Quarterclipped

- Available in sizes: 00, 0, 1
- level insert

The very popular range of Alu Century Support has been increased to include the patented Smart Bond system.

Many farriers enjoy using the wide webbed aluminium shoe with the Century Support heel design, which gives extra cover and support.

Combined with the Smart Bond feature, the Alu Century Support now offers excellent shock absorbing qualities without the need of extra pads or packing. The Smart Bond's ability to absorb shocks enhances the hoof's natural shock absorption found in the back of the foot, including the frog, digital cushion and lateral cartilages. The Smart Bond material dampens the shock waves before they enter the hoof capsule.

The quarterclipped front shoe with its concave section gives the horse improved grip on loose surfaces.

- Provides concussion exactly where needed; onto the heel quarters
- Can be nailed on like the normal non-bonded Century Support; fast and easy with just the right nail pitch, the Smart Bond will not shift if excessive force is applied
- Aluminium shoe in direct contact with the hoof; stronger nailing, no more movement of the shoe and therefore solves the problem of risen clinches
- Widest bonded aluminium shoe on the market; maximum heel support & hoof protection with improved shoe life

A new generation in bonded shoes



ALU TRIUMPH®



The Triumph® is a drop forged aluminium shoe with an optimum front shape. These shoes are commonly used by the western pleasure market, by the endurance as well as the hunter and thoroughbred shoer. Well-placed nail holes allow for good nailing and choices when the wall is less than perfect.

The Sole Relief is built in – saving you time. The Triumph is available clipped or unclipped so you have the choice.

The material used is a high grade aluminium that provides good wear and strength.



Unclipped

- Available in sizes: 4X0, 000, 00, 0, 1, 2, 3
- level insert



Quarterclipped

- Available in sizes: 000, 00, 0, 1, 2, 3, 4
- level insert



Degree Unclipped

- Available in sizes: 000, 00, 0, 1, 2, 3
- level insert
- wedge of approximately 2,5 degrees



ALU TRIUMPH[®]

Eggbar

The Triumph[®] Aluminium range became an instant success with farriers worldwide. This was due to the improved design features on many aspects of the shoes that other manufacturers had been unable to achieve!

When fitting eggbars, you are often trying to shorten the toe to reduce break-over. The flatter toe shape of the Triumph helps the farrier to achieve this, together with a good bevel around the toe, plus a steel insert to give extra wear.

The shoe comes with bevelled back edges to avoid the shoe being pulled off if the horse overreaches.



The Triumph[®] eggbar has excellent nail placement - coarser from toe to heel for strong nailing together with rectangular nail holes and well designed crease. This gives optimum nail fit to eliminate loose shoes.

Quarterclipped

- Available in sizes: 000, 00, 0, 1, 2, 3
- level insert



STEEL KINGS PLATE[®]

Extra Sound



• Available in sizes: 2, 3, 4, 5, 6, 7, 7.5, 8

The Royal Kerckhaert Horseshoe Factory (founded in 1906) has used all its long experience together with the most modern design and production techniques available, to produce the Steel Kings ES, the most advanced steel training plate on the market today. No other horseshoe manufacturer has spent as much time consulting farriers worldwide in order to produce the ultimate steel training plate.

The design gives you a front shoe with a wide section for cover and support. The bevelled heel design gives the farrier the option to fit the shoe safely while still giving width and support.

The Kerckhaert shape is as always quick and easy to fit. The radius clip - with rounded edges - reduces the amount of hoof wall that needs to be removed while fitting. The nail holes are not only punched in the optimum position, but also have the correct pitch and coarseness.

The foot surface of the shoe has a much needed Sole Relief, ideal for the modern thoroughbred hoof. The most modern manufacturing process has resulted in the highest level of finish ever seen on a dropped forged shoe.

The quality of the crease, nail holes, clips and the section itself could only have been dreamed of a few years ago.

***Go to page 8 for a look at the
Alu Kings Plate[®] Extra Sound!***



• Available in sizes: 2, 3, 4, 5, 6, 7, 7.5, 8

The hind shoe has all the features of the front shoe, yet once again the Royal Kerckhaert Horseshoe Factory has raised the bar in horseshoe design by giving the farrier the first drop forged left and right pattern hind training shoe.

The longer and wider outside branch gives added cover and support while the tapered inside branch allows the farrier to fit closely and safely, thereby reducing injuries such as brushing.



STEEL KINGS

Extra Sound Polo



• Available in sizes: 4, 5, 6



KINGS PLATE[®] Extra Sound

Steel or Aluminium



- ✓ Same shape
- ✓ Same Radius clip system
- ✓ Same nail pattern
- ✓ Same coarseness
- ✓ Same pitch for nailing

STEEL KINGS

Extra Sound Wide Clip



• Available in sizes: 5, 6, 7

The new Steel Kings Extra Sound Wide Clip training plate, is the latest addition to the Kerckhaert Race Plate program.

The Wide Clip gives extra strength and stability to the hind shoe, especially on horses which wear their shoes hard or are prone to wall kicking.

The Radius clips maintain the strength in the toe of the shoe and are quick and easy to fit without having to remove a lot of hoof wall.

The extra strength and stability of the new Wide Clip helps maintain the shoe in the correct position, reducing the risk of spreading the shoe.

STEEL KINGS

Extra Sound Plus



• Available in sizes: 4, 5, 6, 7, 7.5, 8

New to the Royal Kerckhaert Horseshoe Company, concave shoe program, is the Steel Kings Extra Sound Plus (ESP).

Designed especially for ex racehorses as they start their new career as a riding horse.

Designed along the same lines as the bestselling Steel Extra Sound training shoe, the Extra Sound Plus has the same easy to fit shape as the original Steel Extra Sound training plate. It also combines all the great features found in the Steel ES, Radius clips, sole relief, boxed off heels, perfectly punched nail holes with the correct pitch and coarseness to match the feet of ex racehorses.

The hind shoes are left and right pattern, with the same easy to fit shape. The wider outside heel with the narrower inside branch allows you to fit the shoes quickly and safely.

The high quality steel and the extra thickness of the material makes this the first riding shoe produced especially for the ex-racehorse. Once again the Royal Kerckhaert Horseshoe Factory wins the race to produce the perfect shoe for ex racehorses.

The Steel Kings Extra Sound Plus is a great new shoe which gives the farrier another option between fitting a steel training plate and a traditional concave riding shoe



• Available in sizes: 4, 5, 6, 7, 7.5, 8

size 7.5 Hind only available sideclipped

STEEL KINGS

Extra Sound Plus Quarter



• Available in sizes: 5, 6, 7, 7.5

STEEL KINGS

Extra Sound Plus High Goal Polo



• Available in sizes: 4, 5, 6

The Kings Polo High Goal features the unique Polo Grip and traditional front shoe design. The thicker section gives better cut into the turf.

Developed from its Kings Polo shoe, the new Kerckhaert High Goal Polo shoe retains all the popular features but with the addition of a new section of material.

The thicker section gives improved grip and traction giving the polo ponies more confidence on grass when playing at high speed.

The Steel Kings ESP High Goal Polo front shoes are ideal to use in combination with the Steel Kings ESP Polo hind, which incorporates the 3/8 stud hole.

STEEL KINGS

Extra Sound Plus High Goal Polo



• Available in sizes: 4, 5, 6



STEEL KINGS DR 15x7



This is the traditional steel training plate for trotters, race horses and yearlings. The perfect concave design gives optimum grip and is creased all the way round to the heels.

The light concave steel section, 15X7, gives good cover and support without adding extra weight. The excellent front & hind patterns offer easy fitting and have well finished sloping heels, preventing lost shoes from over-reaching.

From training plates to race plates:
KERCKHAERT IS A WINNER!



• Available in sizes: Front: 1, 2, 3, 4, 5, 6 Hind: 4, 6, 7, 8

STEEL KINGS DR 16x8



Kerckhaert Steel Kings DR, is a light weight but hard wearing shoe with an incredibly clean, sharp crease and finish to provide maximum grip. The strong Radius clip reduces the amount of wall you need to remove in order to sit the clip in flush with the wall of the hoof, ideal for thinner hoofs.

The design leaves maximum material at the toe for wear and to prevent the shoe from spreading, a common problem on light section shoes. The Kerckhaert Steel Kings DR is an excellent choice for ponies and yearlings and a joy to fit !



• Available in sizes: 2, 3, 4, 5, 6, 7

STEEL KINGS DR 19x8



In addition to the existing Steel Kings DR 15x7 and 16x8 range we have now introduced a new, wider, section to this program.

The steel Kings DR 19x8 front shoe is the solution for racehorses running and training with the same shoes and for weaker-hooved horses who cannot be shod as frequently as other race horses.

The wider section offers maximum cover and support for the highest performance while the typical patented Royal Kerckhaert DR profile offers maximum grip for safety and keeps the weight of this shoe surprisingly low.

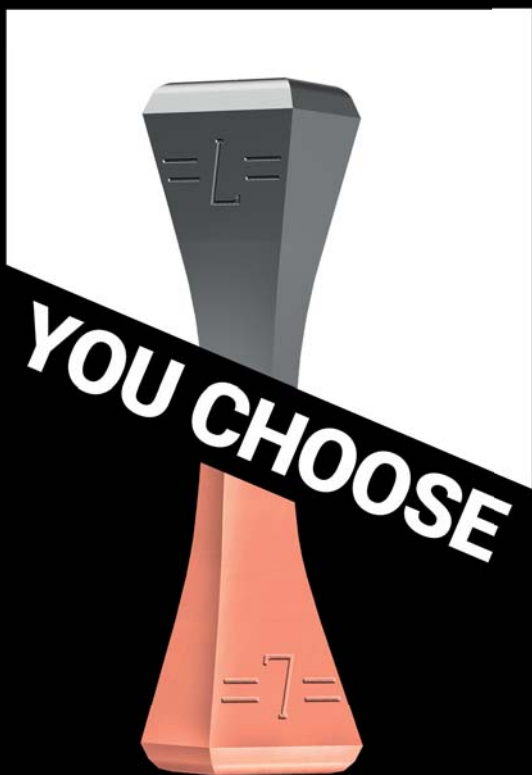
The shoes are precisely punched for FJ0 and JC00 Race nails for a comfortable and long lasting fit.

Steel Kings DR 19x8 is wider, lighter, longer lasting and safer which makes it your first choice for racing and training.

• Available in sizes: 3, 4, 5, 6, 7

LIBERTY

A NAIL EVOLUTION



The Kerckhaert Kings Plate range

10 things you need to know

1. It's true that the Royal Kerckhaert Horseshoe Factory in The Netherlands is the Worlds largest independent horseshoe manufacturer and has been making horseshoes since 1906.
2. Kerchaert has introduced more good options for the horse, farrier, trainer and rider than any other manufacturer in the market. Only Kerckhaert horseshoes have a positive influence on the condition of your horse's feet.
3. Kerckhaert's Kings Plates® are used worldwide by top farriers and trainers.
4. The Royal Kerckhaert Horseshoe Factory did not copy other company's designs but introduced a new level of quality and designs for the modern thoroughbred.
5. Kerckhaert's Kings Plate Super Sound, aluminum race plate has several new exciting new features such as Super Pitch Plus to the first three nail holes and heel elevation.
6. Kerckhaert's Kings Plate® Extra Sound is the first wide webbed aluminium race plate with left and right pattern hind shoes. The Kings Plate Extra Sound gives more cover and support and helps to develop a stronger hoof.
7. Kerckhaert's Kings Plate® Normal Strength are made with traditional strength aluminium and all the design advantages that the Royal Kerckhaert Horseshoe Factory has developed: Radius clip, Sole Relief, better nail position and bevelled heels.
8. Kerckhaert's Kings Plate® Extra Strength have all the design advantages of the Kings Plate Normal Strength a unique tempering system which gives the plate extra strength and wear. Ideal for horses which have to do more road work or that are prone to spreading plates.
9. Kerckhaert's Fast Break ES has a square toe which helps to increase breakover on horses with long toes and low heel conformation.
10. Kerckhaert's Kings Plate® Blue Bond & Smart Bond series were the first bonded race plates with built in Sole Relief and pre-punched nail holes.

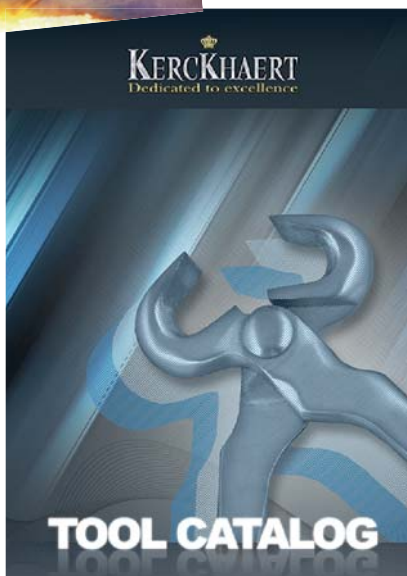
AVAILABLE NOW:



All Kerckhaert riding horseshoes in ONE catalogue!

Your modern guide to the thrills of horseshoeing.

Latest news and trends, vital information and special online features are just one click away!
www.kerckhaert.com



Kerckhaert as the One Stop Supplier
All Premium brands in one catalogue

The only type of race nail you need

LIBERTY
carrera



- Unique, patented neck design
- Super slim shaft
- Made with Cu Shield Technology™



KERCKHAERT RACE PLATES
LIBERTY CARRERA RACE NAILS



Royal Kerckhaert Horseshoe Factory

Rapenburg 76, 4581 AE Vogelwaarde, Holland

Tel.: +31 (0) 114 671361 - Fax: +31 (0) 114 671811

www.kerckhaert.com - post@kerckhaert.com